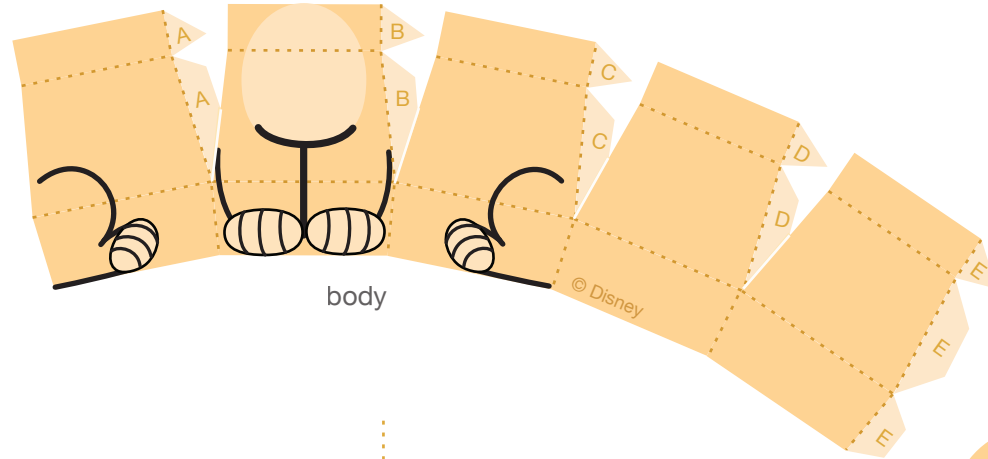
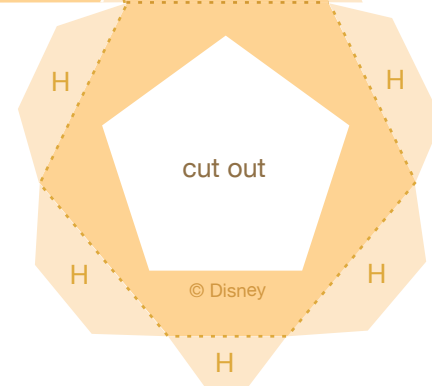


head

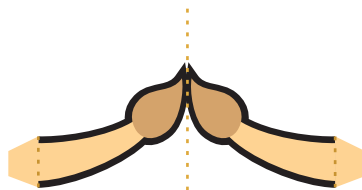


body

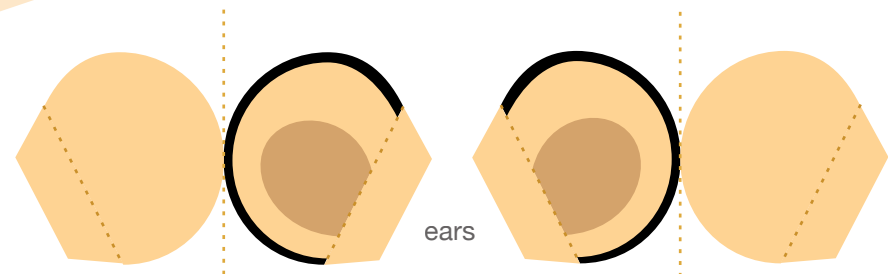


cut out

© Disney



tail



ears

Instructions:

1. Print the template on regular paper or cardstock and cut out the pieces. Make all folds along dashed lines.
2. Starting with Nala's head, use glue or double-sided tape to secure all tabs to their corresponding pieces in alphabetical order. Close the top of Nala's head with the G tabs and the bottom of Nala's head with the H tabs.
3. Make all folds at the top of Nala's body toward you, then secure the tabs in alphabetical order. Slide Nala's head on top of her body.
4. Fold both ears in half along the dashed lines and secure so the designs are two-sided. Butterfly the tabs outward and use them to attach the ears to Nala's head.
5. Fold Nala's tail in half along the dashed line and secure so the design is two-sided. Butterfly the tabs outward and use them to attach the tail to Nala's body.

